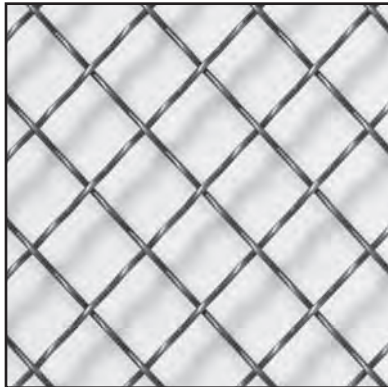


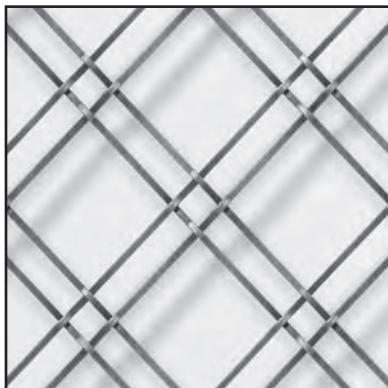
## Wire Grille Inserts

- An accent option for frame only and mullion doors, Conestoga's Wire Grille inserts are woven, not welded, and crimped to achieve specific patterns and designs. Wire Grille inserts feature an electroplated finish with a clear lacquer topcoat for durability.
- Diamond mesh patterns are size specific – no options.
- Available in four attractive finishes in most grille patterns.
- Can be purchased cut-to-size or in full sheets.
- Cut-to-size Wire Grille inserts will have pattern centered side to side, top to bottom.
- Wire Grille inserts will be packaged separately and must be inserted by the customer.
- Minimum size of all inserts is 6" x 6".
- Wire Grilles can be held in place with standard clear plastic retainer moulding or wood retainer moulding. If 1/8" glass is used in conjunction with Wire Grille insert use #52 moulding (requires trimming) or #907 moulding.
- Grilles will flex during shipping and handling, but can be gently pulled back to original dimensions.
- Oversized grilles, alternative mesh patterns and finishes available through Special Designs.
- Lead-time for all Wire Grille inserts is 10 business days.
- Expedite program not available.
- Exterior edges of Wire Grille inserts are sharp. Caution should be used when opening package and handling grille inserts to avoid cuts and other injuries.



### WG100 – Round Wire

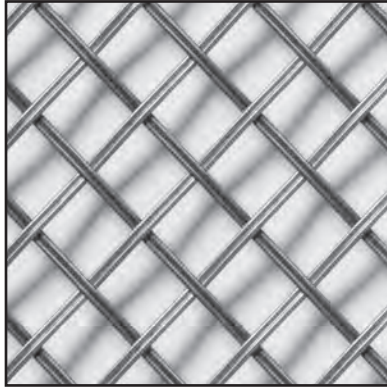
- Cut-to-size Antique Brass, Oil-Rubbed Bronze, Satin Steel – \$58.00 per square foot.
- 20" x 48" full sheet Antique Brass, Oil-Rubbed Bronze, Satin Steel – \$163.00.
- Cut-to-size Stainless Steel – \$98.00 per square foot.
- 20" x 48" full sheet Stainless Steel – \$289.00.
- Double crimped, 1/16" round wire with 3/4" mesh openings.



### WG101 – Square Wire

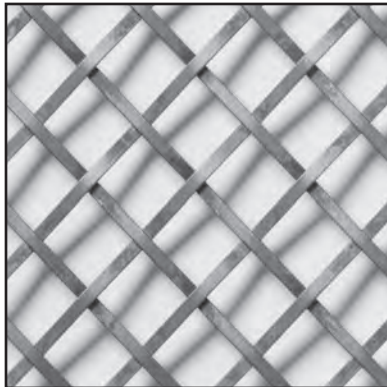
- Cut-to-size Antique Brass, Oil-Rubbed Bronze, Satin Steel – \$97.00 per square foot.
- 20" x 48" full sheet Antique Brass, Oil-Rubbed Bronze, Satin Steel – \$289.00.
- Stainless Steel finish not available.
- Press crimped, 1/16" x 1/16" square wire with a combination of 5/16" and 1-1/8" mesh openings.

## Wire Grille Inserts (continued)



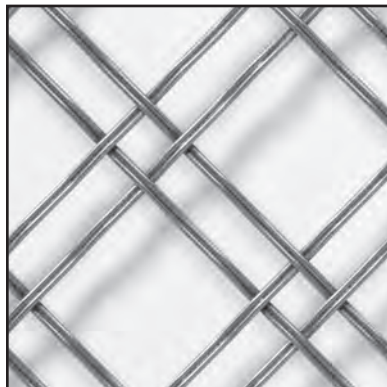
### WG102 - Reeded Wire

- Cut-to-size Antique Brass, Oil-Rubbed Bronze, Satin Steel – \$76.00 per square foot.
- 20" x 48" full sheet Antique Brass, Oil-Rubbed Bronze, Satin Steel – \$216.00.
- Cut-to-size Stainless Steel – \$130.00 per square foot.
- 20" x 48" full sheet Stainless Steel – \$390.00.
- Single crimped, 1/16" x 1/8" reeded wire with 3/4" mesh openings.



### WG103 - Flat Wire

- Cut-to-size Antique Brass, Oil-Rubbed Bronze, Satin Steel – \$76.00 per square foot.
- 20" x 48" full sheet Antique Brass, Oil-Rubbed Bronze, Satin Steel – \$216.00.
- Cut-to-size Stainless Steel – \$130.00 per square foot.
- 20" x 48" full sheet Stainless Steel – \$390.00.
- Single crimped, 1/16" x 1/8" flat wire with 3/4" mesh openings.



### WG106 - Reeded Wire

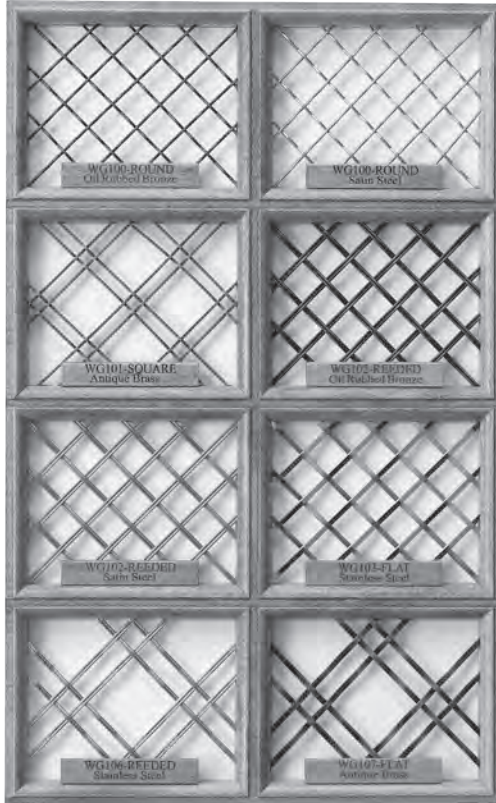
- Cut-to-size Antique Brass, Oil-Rubbed Bronze, Satin Steel – \$69.00 per square foot.
- 20" x 48" full sheet Antique Brass, Oil-Rubbed Bronze, Satin Steel – \$184.00.
- Cut-to-size Stainless Steel – \$108.00 per square foot.
- 20" x 48" full sheet Stainless Steel – \$315.00.
- Double crimped, 1/16" x 1/8" reeded wire with a combination of 1/2" and 1-1/2" mesh openings.



### WG107 - Flat Wire

- Cut-to-size Antique Brass, Oil-Rubbed Bronze, Satin Steel – \$69.00 per square foot.
- 20" x 48" full sheet Antique Brass, Oil-Rubbed Bronze, Satin Steel – \$184.00.
- Cut-to-size Stainless Steel – \$108.00 per square foot.
- 20" x 48" full sheet Stainless Steel – \$315.00.
- Double crimped, 1/16" x 1/8" flat wire with a combination of 1/2" and 1-1/2" mesh openings.

**Wire Grille Inserts (continued)**



**Wire Grille Display Unit**

- Features 8 Wire Grille patterns and all 4 program finishes.
- Unit is 10-3/4" x 17-1/2".
- Hard Maple framing is finished in a medium brown.
- Price is \$60.00 net.
- Order using part #2601790A.
- Lead-time is 15 days.